

# [Digital Canal Corporation](#)

## Solution Papers

---

### Summary: *Creating Greek Returns*

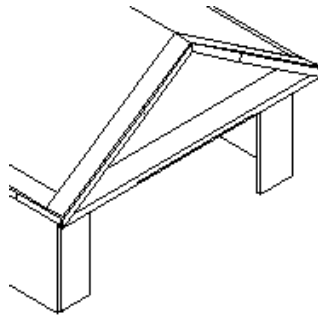
*The tips, solutions, and suggestions outlined in Digital Canal Solution Papers are suggested for use at your own risk. Document contents are subject to change without notice. Digital Canal Corporation is not responsible or liable for damage or events that may occur as a result of following suggestions from any Digital Canal Technical Support document. All other product names are trademarks of their respective holders.*

---

**Overview:** The following procedures below will accurately take you through the necessary steps to create Greek Returns on gable ends. The drawing below will be used for reference.

---

### Solution:



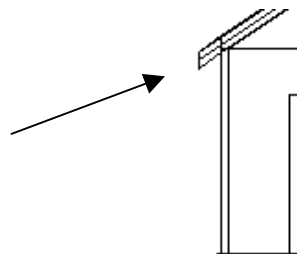
**In Eave Options** set the style to Plumb, set the overhang and the fascia width.

**In Gable Options** set the overhang to match that of the eave, set the return distance to 0 and set the fascia width.

**Create the eaves and the gables.**

**To create the return:**

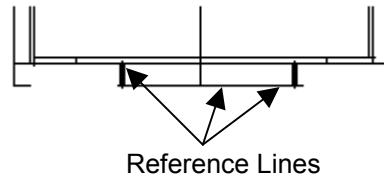
1. Select Front View.
2. Select Outline → Line. Click on the Elevation icon. Select Mark and select the lower left point of the roof for elevation.



3. Select Plan View.

We will create a small shed roof to form the Greek return. To do this we will create a reference line at this height and the same overhang distance from the wall as the eaves and gable and place a

plane on it. We will create a small shed roof in the middle of the gable wall and then project the ends to the gable overhangs. We will create a reference line on each end of the small shed roof section to define the ends.



4. Place a plane on the reference line that is parallel with the gable wall.
5. Create a single roof by selecting the plane, then the left reference line, the gable wall and finally the right reference line.
6. Select Front Left view. Select Roof → Shape → Project → To Another → Roof. We will now project one end at a time of the new shed roof back to the gable.
7. Starting on the left side when prompted to Select roof containing destination plane, select the left main roof and select the underside face.
8. When prompted to Select roof to project, select the small shed roof and select the left end face.
9. Repeat steps 7 & 8 for the right side.
10. The intersection may not look correct to you but that is because the fascia is not on. The fascia is actually part of framing. Select the Production mode → Framing → Fascia and frame the roof sections.
11. The return is now complete.

***To create Greek Returns on the gable ends only and not running the entire length of the gable end, simply follow the steps above. Once completed select Roof → Split and split this small shed roof at the center and project each end back toward the gable end the desired distance.***