

# [Digital Canal Corporation](#)

## Solution Papers

---

### Summary: *Creating and Inserting a Logo into a Border*

*The tips, solutions, and suggestions outlined in Digital Canal Solution Papers are suggested for use at your own risk. Document contents are subject to change without notice. Digital Canal Corporation is not responsible or liable for damage or events that may occur as a result of following suggestions from any Digital Canal Technical Support document. All other product names are trademarks of their respective holders.*

---

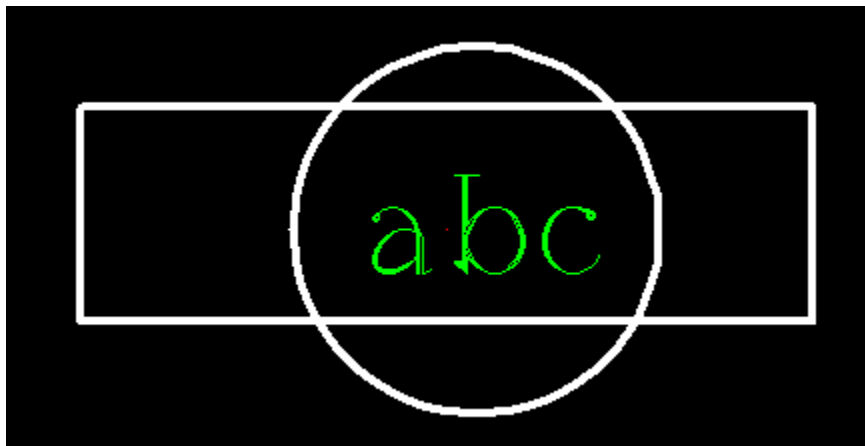
**Overview:** This solution paper will accurately take you through the procedures necessary to create a "logo" and insert it into a SolidBuilder™ border drawing.

---

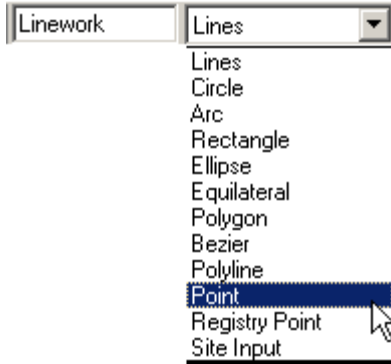
### **Solution:**

This is a 2D design and is created as a Plan Working Drawing, saved as a symbol, and using Cad Menu to place it onto a Border.

1. From the main SolidBuilder menu create a new model named logo.
2. Draw a small free form 2' wall. This is so that we have a wall to pick for our cut height when we make the plan drawing.
3. Go to File → New → Working Drawing → Plan → enter logo for name → and 5' for cut height and exclude top portion.
4. Zoom in 5 times ( our logo is going to be only  $\frac{3}{4}$ " , so we need to be able to see it).
5. From the main pulldown menu select → Settings → Layer
6. The Select Layer box opens and change the Layers Categories window to linework in the upper right hand corner.
7. In the Add New Layers window type in 'user' and then hit the Add New Layers button. Change the user linework color to red.
8. Select Set Visible Layers and make only the user linework layer visible and close the box.
9. Your screen is now blank and we will begin drawing the logo as shown below.

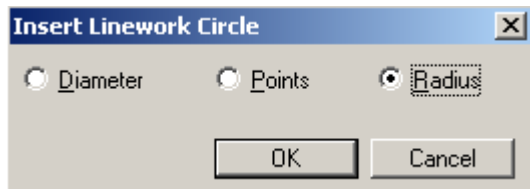


10. Select Linework → Point. We will place a point mark that we will use to jump to when creating the circle and the rectangle.



11. Move your cursor near the center of your screen and left mouse click. This will place a small brown point. It may be hard to see but you will be able to jump to it.

12. Select Linework → Circle. The Insert Linework Circle box opens and select radius.



13. You are prompted to Indicate center of circle. Use the P point jump command and select the point created above.

14. You are prompted to Indicate a point on the circle. Hit the X key and type in .75". This creates a circle with a diameter of 1 1/2". Hit ESC to finish the command.

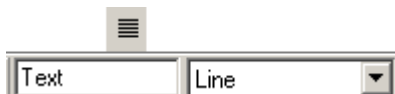
15. Select Refresh to clean up drawing and remove large red box.

16. Next we will create the rectangle. Select Linework → Rectangle. You are prompted to Mark first line endpoint.

17. Using the P point jump command, select the point we created earlier. Hit the X key. Type in X 1.5" and Y .5". This locates the upper right hand corner of the rectangle.

18. You are prompted to Mark opposite diagonal line endpoint. Hit the X key and type in X -3" and Y -1". This creates the opposite corner of the rectangle. Hit ESC to cancel command.

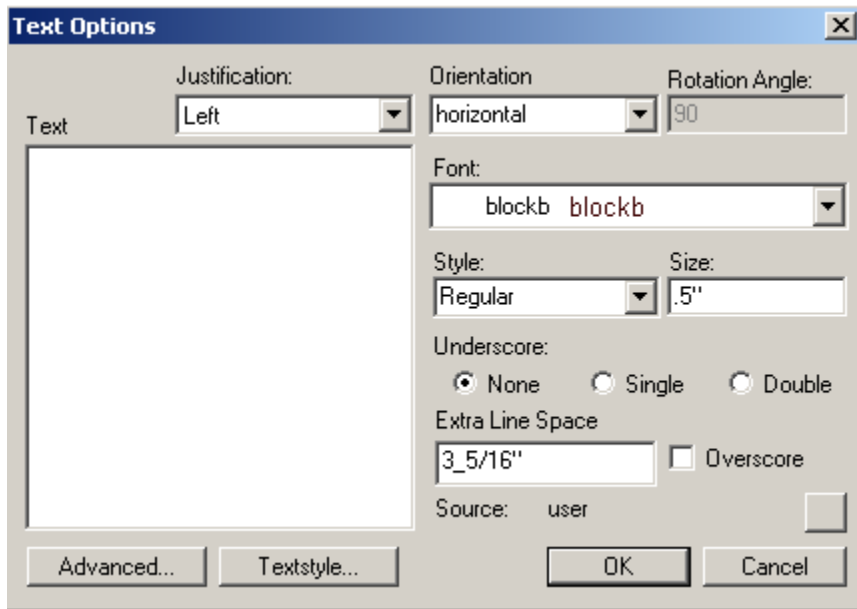
19. The text is next. Select Text and hit ESC to interrupt the command. Set the text window to Line. This will allow us to enter a line of text.



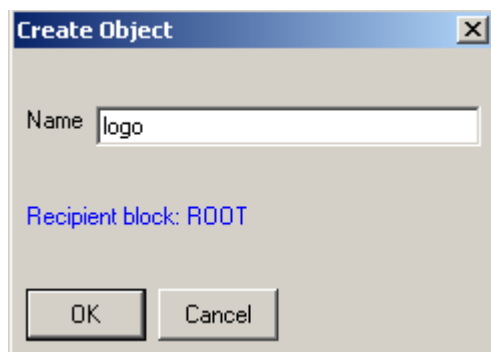
20. Click on the Text icon again. The Text options box opens. Match the options below. Hit OK.

21. You will be prompted to Mark location for left edge of text line. Using the E endpoint jump command select the lower left hand corner of the rectangle. Hit the X key and type X 1" and Y .25".

22. The Enter Text Line box opens and type in abc and hit OK.

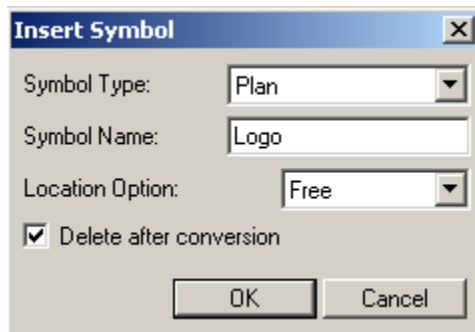


23. The box opens a second time and hit OK. Your text is now placed and the logo is finished. Hit ESC and then cancel to end command.
24. So far the logo consists of three separate entities, the circle, the rectangle and the text. In order for SolidBuilder to recognize this as a symbol, we have to convert these three entities into one. This will be done in the Cad Menu.
25. From the main pull down menu select File → Cad Menu. This will take you into the Cad Menu.
26. From the main pull down select Structure → Select → Root. You will not notice anything happening.
27. From the pull down select Structure → New → Object. Type in Logo for the name. Hit OK.



28. Select Structure → Convert → Text lines to Objects.
29. Left mouse click anywhere on the text.
30. Select Structure → Relocate → Primitives. Left mouse click and select Fence Inside. Draw a rectangle fence around the logo. Left mouse click again to accept group. When prompted to select group to accept click anywhere on the rectangle.
31. We need to set the base point for insertion. Select Geometry → Axis and base point → Set Base point → Objects. You are prompted to pick object. Left mouse click on the logo. Right mouse click and use the endpoint command and select the lower left hand corner of the logo

32. The logo is now a single entity and we can place it in a SolidBuilder symbol library.
33. Select File → Save As → and make sure it is saved as a drw file.
34. From the Main pull down menu select File → SolidBuilder and go back into SolidBuilder.
35. Select Symbols → Insert → One by One
36. The Insert Symbol box opens and select draft\_plan → Next.
37. Select Add. The Insert symbol box opens. Set Symbol Type to Plan, Symbol Name to logo, and Location to Free.



38. You are prompted to Select an object to deposit into library. The lower left hand corner will have a small red square. When the small square is highlighted, click on it. The logo symbol will turn purple and fill the screen. Click the Back button from the Insert Symbol box and the new logo symbol will show when you select logo from the list.
39. To place the symbol on a Border Drawing, select File → Open → Border and select the border that you want to place the logo on.
40. After the boarder drawings is loaded select File → Cad Menu. This will take you into the Cad Menu where we will place the logo.
41. From the main pull down menus select Structure → Model → Insert. From the list on the left select plan\_sym.mlb and from the list on the right select logo and hit Next.
42. The Set model attributes box opens. Select Object and set the Rotation angle to x90y0z0. Hit Finish.
43. Position the logo where you want it and left mouse click.
44. If the logo is the wrong scale you can re-size it. Select Geometry → Scale → Object and select the logo.
45. The Scale Object box opens. If the logo is twice as big as you want, you would enter .5. If you want to increase the size by 25% you would enter 1.25 and so on.
46. The logo can also be repositioned. Select Geometry → Move.
47. After you have your logo positioned and scaled.
48. Select Tools → Toolbars → Edit, Select Developer, Click OK.
49. Click Open in the developer toolbar; change Files of Type to EX. And open sbstart.ex

50. Click on Execute File (!). This will open Solid Builder back up
51. Then you can save your work.