

[Digital Canal Corporation](#)

Solution Papers

Summary: **Creating Border Templates**

The tips, solutions, and suggestions outlined in Digital Canal Solution Papers are suggested for use at your own risk. Document contents are subject to change without notice. Digital Canal Corporation is not responsible or liable for damage or events that may occur as a result of following suggestions from any Digital Canal Technical Support document. All other product names are trademarks of their respective holders.

Overview: This solution paper will walk you through creating a border template for printing out overlay drawings (more than one drawing on the same page). It is recommended that you first go through the white paper on "Creating Borders" to get a better understanding of how Borders are used in SolidBuilder.

Solution:

Creating Border Templates can be very useful and timesaving if you print your working drawings in the same fashion for each project. For example, let's say you always print the Front and Right elevations of each design on the same page and in the same order. So you can setup a template with these files and then use this same template for your next project. But before creating a template, you may want to setup subfolders to keep all your drawings organized. You might have a folder called "Drawings" and then have subfolders for each project you work on. So you may call these subfolders your client's names. Then under these subfolders, you want to save each working drawing file the same name for each project. So under "Jones", you can name your elevations – Front, Right, etc for the "Jones" project. Then you can name "Smith" working drawings- Front, Right, etc. but save them under the "Smith" subfolder. Then when you are ready to print, you will select your border template and all you will have to do is change the directory folder to the job you are working on and SolidBuilder™ will update the print with those drawings.

To Save Working Drawings that are attached to a 3D model:

1. Open up the model that has your working drawings attached to it, one that you want to print.
2. Select the **Window** pull-down menu and select a Working Drawing, then select ALL for the Layers to make visible.
3. Select **File/Disconnect 2D drawing**.
4. Comment dialog box pops up and click OK.
5. **Save As** dialog box appears and select the folder you want to save the file in and then type in the name that you want to call the drawing. Now that Working Drawing is saved as a *.WD file (2d Drawing).
6. Do the same for all the working drawings that you want to print out as an overlay.

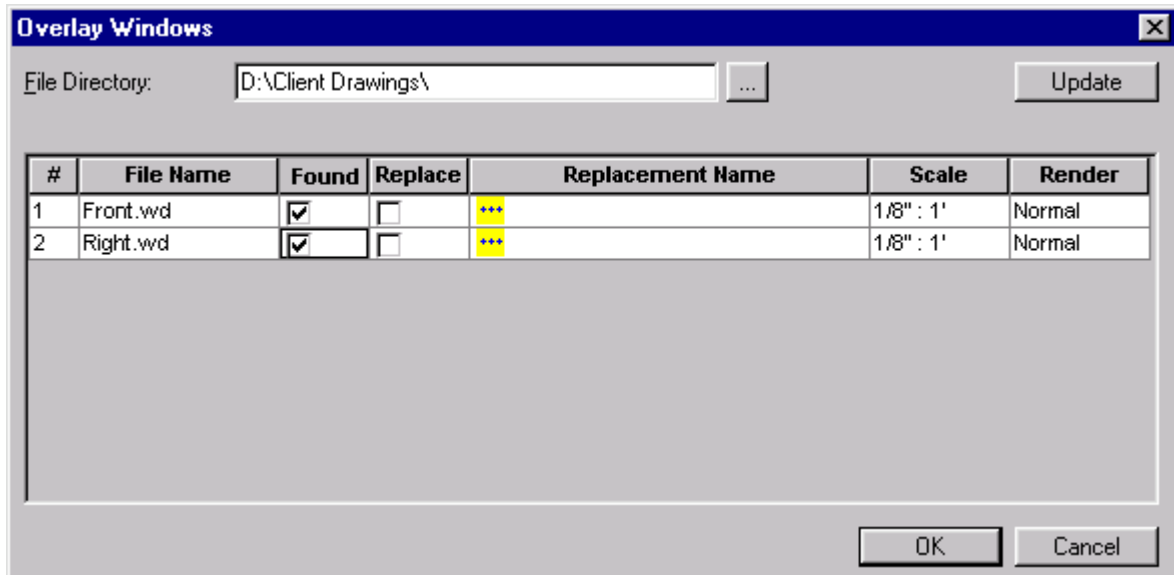
To Create the Border Template:

7. First open an existing border or create a new border.
8. Once you have a border open, click on **Insert/Overlay Window**.
9. Find the file you would like to print out for the first drawing (Ex. Front elevation).
10. Scale the drawing and click OK.
11. Draw a window (inside the border lines) where you would like the drawing to be placed.
12. Repeat these steps for each drawing you would like to print on this border template.
13. Then select **File/Save**.
14. Draw a box around all the overlay windows but inside the border lines.
15. Once you have it saved, open a model drawing. It will prompt to Save again but click No.

To Setup the Print Options:

16. Once you have a model open, click **File/Print** to open the Print Options dialog box.
17. To use your Border template, click on **"Use an existing border template"**. Click on **Select** and find the border template that you just created and click OK.
18. Click OK on the Print Options box.

The Model Information will pop up and you can edit the fields to update your Titleblock or else click OK. Then the following dialog box will appear:



This dialog box will list the files that you selected when you created the border template. If you want to print these files, click OK. If you want to print the same type of working drawings but you saved them in a different directory, click on the Browse button (gray button). Then locate the folder you saved the working drawings in and then click on Update. SolidBuilder will then tell you if it found those files in that directory or not by placing a check mark under the "Found" heading. Once it has found the files, click on OK and then the drawings will be placed into your border. If you want to replace the file with a different name then click on the yellow button to select a different file. You may also change the scale at this point. Once you click OK, it will give you a preview of the layout. From there you can print the drawings or cancel out.